

XENON & HALOGEN - 120V

Economical and easy to use line voltage puck - no transformer needed!

Performance

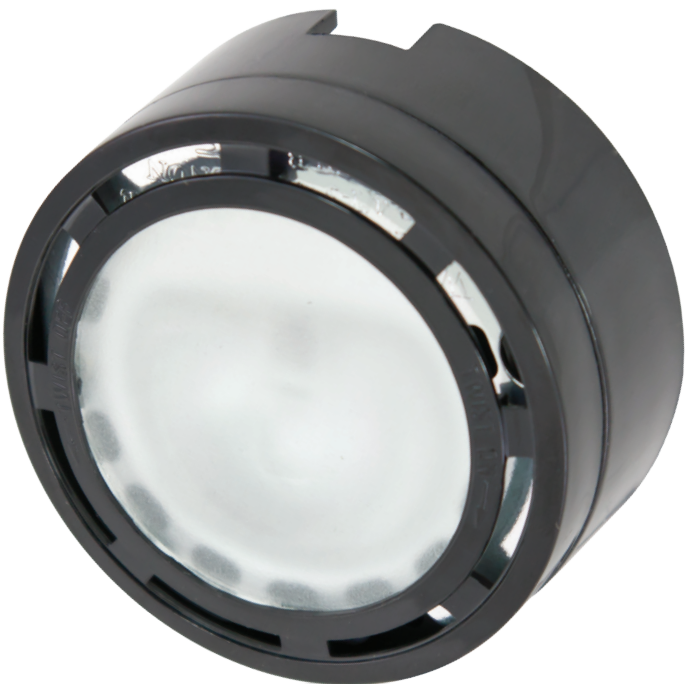
- Versatile - build a system using kits and/or individual pucks
- Dimmable with standard incandescent dimmers
- Pucks emit 50+ lumens each with 100 CRI

Construction

- Heavy duty hard plastic housing with frosted glare-free tempered glass lens
- Aluminum reflector optimizes light and dissipates heat
- 18AWG SPT-1 leads are 4' in length for easy routing
- Surface ring has built-in ventilation openings

Installation

- Recess or surface mount - easy twist-off design separates collar from puck for recessed applications (recess pucks require a 2-1/8" cut-out)
- Build your own system with single pucks and/or individual puck lights
- Convenient 2- and 3-light kits include power cord with roll switch and 12" linking cables (Xenon only)



Specifications

| | |
|-------------------|------------------------------------|
| Series | LVPX (Xenon) / ALLVP (Halogen) |
| Input voltage | 120V AC, 60Hz |
| Color temperature | 3200K / 2800K |
| CRI | 99 |
| Wattage | 20W per puck |
| Lumens | 82Lm / 115Lm |
| Maximum run | 200 watts |
| Beam angle | 65° |
| Dimming | Most standard incandescent |
| Housing | Heavy duty plastic |
| Lens | Frosted tempered glass |
| Rating | c/UL/us Listed, dry locations |
| Dimensions | 2-3/4"Dia. x 1-3/8" or 1/2"H (rec) |
| Switching | Roll-switch (kits) or ALSLBOX |
| Mounting | Surface or recess, screws included |
| Linking | Up to ten with ALLVPEX cables |
| Lamp specs | 120V Xenon, G8 base, 1-3/8" MOL |
| Rated life | 8,000 hrs / 2,500 hrs |

Building a System

Determine Layout and Installation:

- Determine quantities, locations and type of installation
1. Hardwire
 2. Cord and Plug

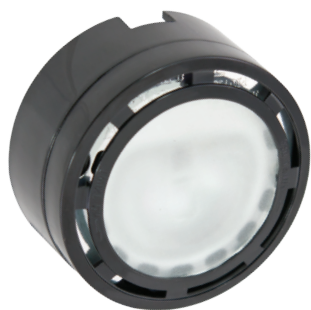
Select Power Input Accessories:

1. Hardwire: Order ALSLBOX for each power feed location
2. Cord and plug: Order individual or 3-pack kits and additional pucks individually as needed to fill in quantity

Select Linking Accessories:

Use linking cables between pucks as needed (12" ones are included in kits). Order a 12" (minimum length) linking cable to reach the ALSLBOX

120V Pucks



LVPX20BK-B (Xenon)
ALLVP20BK-B (Halogen)

120V Puck - Black, 20W
82Lm (Xenon), 115Lm (Halogen)



LVPX20WH-B (Xenon)
ALLVP20WH-B (Halogen)

120V Puck - White, 20W
82Lm (Xenon), 115Lm (Halogen)

Individual 120V pucks include 3" lead wire, 3" tail wire and mounting screws

120V Puck Kits



LVPX20BK (Xenon), ALLVP20BK (Halogen)
Single Puck Kit - Black

LVPX80BK (Xenon)
Four Puck Kit - Black



LVPX20WH (Xenon), ALLVP20WH (Halogen)
Single Puck Kit - White

LVPX40WH (Xenon)
Two Puck Kit - White

LVPX80WH (Xenon)
Four Puck Kit - White

Single puck kits include (1) puck with 3" lead wire, (1) 6' power cord with inline switch and mounting screws.

Two puck kits include (1) puck with 3" lead wire, (1) pucks with 3" lead and 3" tail wire, (1) 12" linking cables, (1) 6' power cord with inline switch and mounting screws.
Four puck kits include (1) puck with 3" lead wire, (3) pucks with 3" lead and 3" tail wire, (3) 12" linking cables, (1) 6' power cord with inline switch and mounting screws.

120V Puck Accessories



ALSLBOX-WH-B (White)
ALSLBOX (Black)

Slimline hardwire box
c/UR/us Recognized, dry locations



ALLVP-PC6-WH (White)
ALLVP-PC6 (Black)

6ft power cord
c/UL/us Listed



Linking Cable - Black
ALLVPEX12 12"
ALLVPEX24 24"



LVPX20BP (2-Pack)
Replacement 120V xenon lamps
20 watt / 8,000hr rated life
1-3/8" M.O.L.



ALLVP20B (2-Pack)
Replacement 120V halogen lamps
20 watt / 2,500hr rated life
1-3/8" M.O.L.



Linking Cable - White
ALLVPEX12WH 12"
ALLVPEX24WH 24"