

L46

EXTERIOR | INTERIOR

Steplight | For walls, stairs, and walkways.

• Wet, Damp, and Dry location

RoHS   



Engraving Option

Ordering Information

Clear Form

Date : _____
Project : _____
Type : _____

Quantity : _____
Note : _____

Specifications

Luminaire | Example Code: L46-3-W30H-MK1-S6

| Product | Version | CCT & CRI | Mounting Kit ¹ (optional) | Engraving (optional) | Finish ² |
|---------|--------------|--|---|-------------------------|--|
| L46 | | | | | |
| | 3 3W 6 6W | W22S 2200K 80+ W27H 2700K 90+ W30H 3000K 90+ W35H 3500K 90+ W41H 4100K 90+ | MK1 vertical surface | E engraving | Aluminum Finishes: MA matte clear anodized BK black powder coated WH white powder coated BZ bronze powder coated Stainless Steel Finish: S6 stainless steel 316 |

System Components (Ordered Separately)

Remote Driver : _____

* Consult Website or Factory.

Important Notes

Specifications

1. Mounting kit is ordered separately (consult factory). Back box must also be purchased with MK1 kit.

L46

EXTERIOR | INTERIOR

Steplight | For walls, stairs, and walkways.

• Wet, Damp, and Dry location



Engraving Option

Performance

| Wattage | Forward Current | Power Consumption Budget per fixture (including driver) | LED output (Source) | Fixture Output (Delivered) |
|---------|-----------------|--|------------------------|-------------------------------|
| 3W | 350mA | 4W | 330 lm | 43.9 lm |
| 6W | 700mA | 8W | 660 lm | 87.8 lm |

Application

| | |
|-------------|--|
| Environment | Dry / Damp / Wet Location approved. IP 66. |
| Mounting | Mounts to horizontal oriented single gang box. Box opening: Width 2-3/8" (60.33mm) X Height 2" (50.8mm) MK1 mounting kit (optional): Recommended for easy installation on vertical surfaces (e.g. stair risers, walls). See "Mounting Options & Dimensions, " |

Electrical

| | |
|----------------|---|
| Power Supplies | Non-dimmable integral driver included (100-240V AC input). Compatible with remote driver for wet locations (not included). |
| Control | On/off control Dimming(consult factory): ELV or 0-10V dimming with appropriate drivers Other options (consult factory): TRIAC/MLV, DMX, DALI, Casambi, Power over Ethernet |

Luminaire Construction

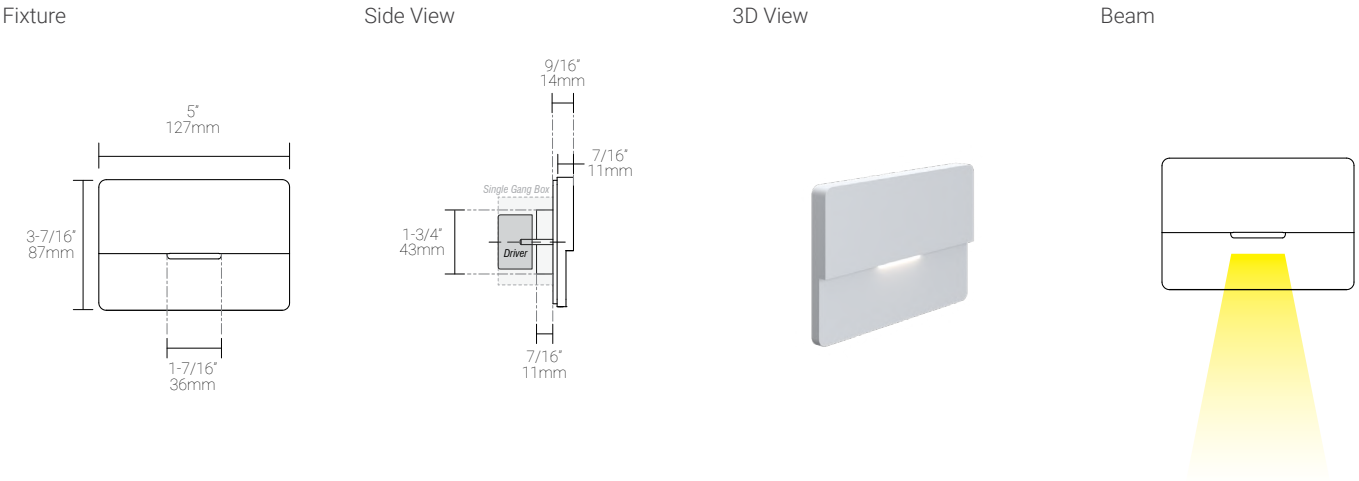
| | |
|---------------------|--|
| LED Light Source | W22S = CCT: 2200K, CRI (Ra): 80+, Colour Consistency: 3SDCM W27H = CCT: 2700K, CRI (Ra): 90+, Colour Consistency: 2SDCM W30H = CCT: 3000K, CRI (Ra): 90+, Colour Consistency: 2SDCM W35H = CCT: 3500K, CRI (Ra): 90+, Colour Consistency: 2SDCM W41H = CCT: 4100K, CRI (Ra): 90+, Colour Consistency: 3SDCM |
| Standard Compliance | ✓ADA-compliant ✓WELL standard – Feature 58: Color Quality |
| Weight | 1.5 lbs (0.68 kg). Typical Aluminum Fixture. |
| Material | Fixture: machined marine-grade aluminum or machined stainless steel (316) with tempered glass |
| Supplied with | Driver: Non-dimmable integral driver included. |
| Warranty & LED Life | 5 years limited warranty Estimated useful life of LED is 50,000 hours. |

Ordered Separately

| | |
|-------------------|--|
| System Components | Power supplies: alternate remote driver for dimming options Please consult factory for available driver options. Mounting kit: MK1 & Back box Custom back boxes: see Pg.3- Mounting Options & Dimensions. |
|-------------------|--|

Mounting Options & Dimensions

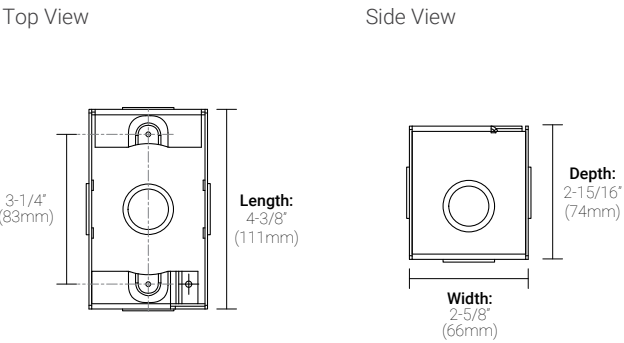
LED Insert Dimensions



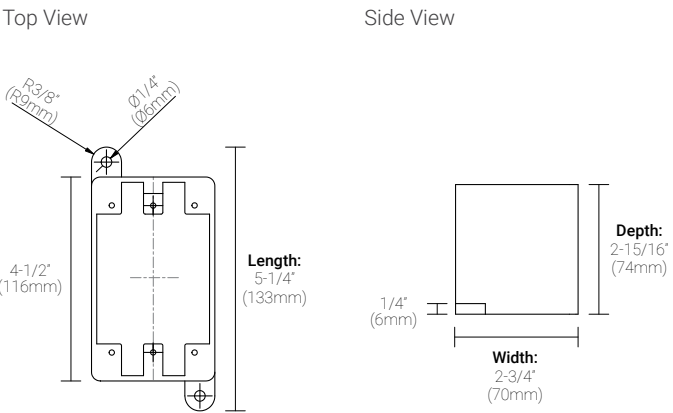
Custom Rectangular Back Box for Wall Installation

1. For wall installation, custom rectangular electrical boxes are available as alternative options.

Single Gang Back Box | Order Code: EBX-SGB1

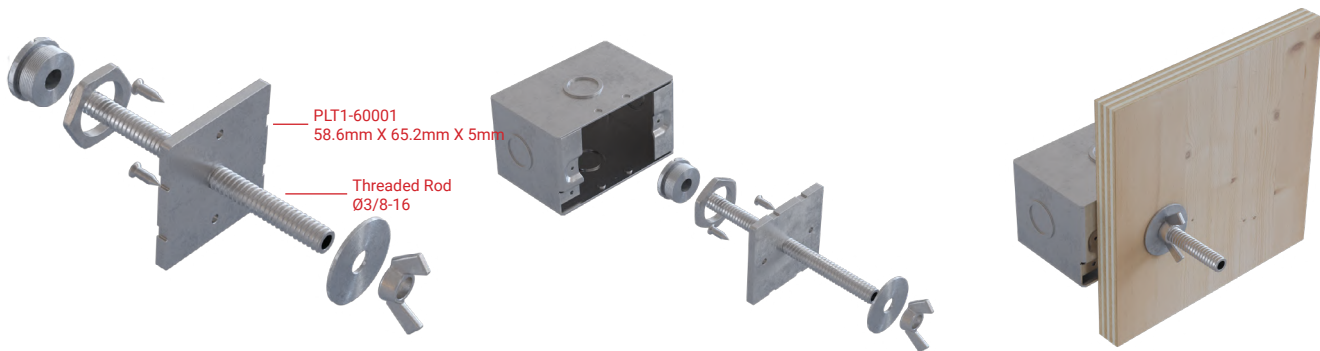


Scepter FD Back box | Order Code: EBX-SFD



MK1 | For walls and stairs

Mounting Kit Exploding Views * *Back box not included*



MK1-SGB1

MK1-SGB1 shown with EBX-SGB1

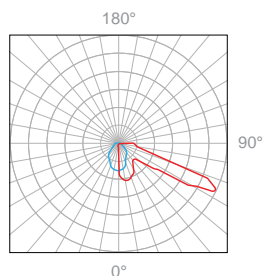
MK1-SGB1 shown with EBX-SGB1
and Plywood Form

Wall-mount Plywood Form Installation (shown with L46)

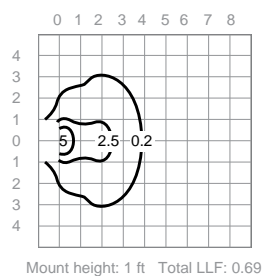


3W, 3000K, 90+ CRI

Polar Candela Distribution



Isofootcandle Plot



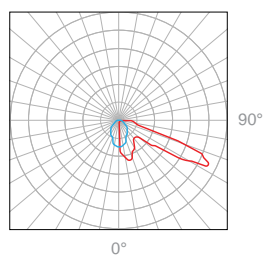
Illuminance at a Distance

| Distance | | Center Beam fc | Beam Width | | | |
|----------|-------|----------------|------------|-------|-------|-------|
| 1.5ft | 0.45m | 7.15fc | 3.5ft | 1.06m | 0.4ft | 0.12m |
| 3.0ft | 0.91m | 1.79fc | 7.1ft | 2.16m | 0.9ft | 0.27m |
| 4.5ft | 1.37m | 0.79fc | 10.6ft | 3.23m | 1.3ft | 0.39m |
| 6.0ft | 1.82m | 0.45fc | 14.1ft | 4.29m | 1.7ft | 0.51m |

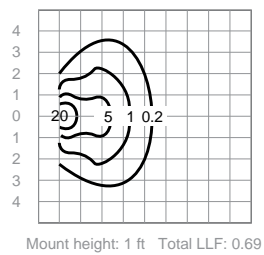
Delivered Lumens: 54.7lm
 ■ Vertical Beam Spread: 99.3°
 ■ Horizontal Beam Spread: 16.5°

6W, 3000K, 90+ CRI

Polar Candela Distribution



Isofootcandle Plot



Illuminance at a Distance

| Distance | | Center Beam fc | Beam Width | | | |
|----------|-------|----------------|------------|-------|-------|-------|
| 1.5ft | 0.45m | 12.9fc | 3.6ft | 1.09m | 0.4ft | 0.12m |
| 3.0ft | 0.91m | 3.22fc | 7.1ft | 2.16m | 0.4ft | 0.27m |
| 4.5ft | 1.37m | 1.43fc | 10.7ft | 3.26m | 1.3ft | 0.39m |
| 6.0ft | 1.82m | 0.80fc | 14.2ft | 4.32m | 1.8ft | 0.54m |

Delivered Lumens: 91.6lm
 ■ Vertical Beam Spread: 99.7°
 ■ Horizontal Beam Spread: 16.9°

Appendix

Aluminum Finishes



MA matte clear anodized



BK black powder coated



BZ bronze powder coated



WH white powder coated

Stainless Steel Finish



S6 stainless steel 316