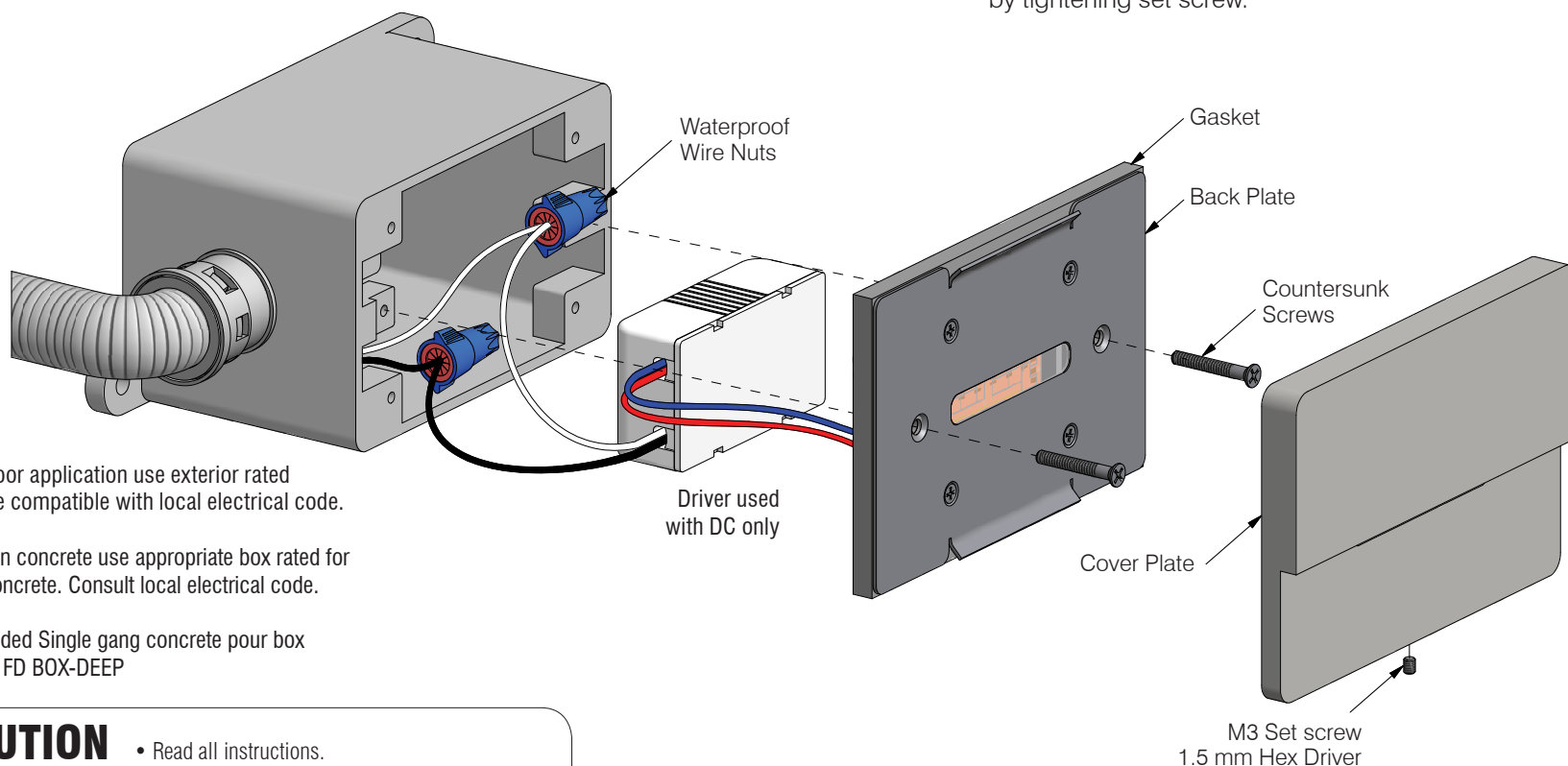


1 Connect primary to driver input wires then fit into electrical box.

2 Align back plate to electrical box and attach with two countersunk screws

3 Mount cover plate to back plate and secure by tightening set screw.



- For outdoor application use exterior rated enclosure compatible with local electrical code.
- For cast in concrete use appropriate box rated for cast in concrete. Consult local electrical code.

Recommended Single gang concrete pour box
SCEPTER / FD BOX-DEEP



CAUTION

- Read all instructions.

- **WARNING: RISK OF FIRE OR ELECTRICAL SHOCK:** Do not make or alter any openings in the compartment of wiring or electrical components during installation. Do not alter or add ballasts, or any other electrical components.
- Installation and use of this fixture mounting assembly requires a person familiar with the construction and operation of luminaire electrical systems and the hazards involved, if not qualified, do not attempt installation.
- Turn off power before installation.
- Do not over tighten screws.
- Do not spray water on fixture during cleaning. Avoid using detergents with hand softeners, anti-bacterial agents, glass cleaners or acrylic cleaning products.
- **KEEP THESE INSTALLATION INSTRUCTIONS.**

Parts

Parts	Qty.
• LED unit w/ gasket	1
• Cross countersunk screws	2
• Set screw	1
• Waterproof wire nuts	2

Tools

• Phillips screwdriver	<i>not included</i>
• Allen key	<i>included</i>

Remote Driver Option

Connect fixture wires directly to low voltage box leads.

Maintenance

Use a soft cloth to remove any fingerprints. and clean acrylic lens.

L46
Installation
Instructions